



October 1990

- Oct. 3 - Recycling
- Oct. 6 - *Dinosaurs in Your Backyard*, see p. 3
- Oct. 7 - Visions Committee Meeting, see p. 10
- Oct. 11 - *Investing for College Funding*, see p. 3
- Oct. 12 - Swim Team Parents Meeting, see p. 15
- Oct. 17 - Recycling
- Oct. 20 - Recycling Fun Day, see p. 14
- Oct. 27 - Halloween Party, see p. 6
- Oct. 27 - Fright Night, see p. 3

LFYC Office • 663-0158

Mrs. Margaret Dam, Administrative Assistant

Mo • Tu • Th 8 am - 1 pm Sa 9 am - noon

READY REFERENCE

Board of Trustees

Andy Bethune	Commodore	-5358
Bob Drummond	Secretary	-0074
Stu Saposnik	Treasurer	-2785
Joe Pilewski	-3804	James Gray
Steve Levinson	-1383	Greg Plifka
		-0253
		-1333

Trustee's Committee Assignments

Andy Bethune	Greg Plifka
House	Porthole
Sports/Sailing	Tennis
Joe Pilewski	Nominating
Grounds/Maintenance	Social/Sunshine
Nursery School	Steve Levinson
James Gray	Docks
Galley	Beach
Membership/Welcoming	Stu Saposnik
Robert Drummond	Block Captains
By-Lays	Budget
Multi-Year/Land Sale	Safety
Insurance	

House Chairman - Grace Bacorn -2944 • **Nursery School Chairman** - Janet Pilewski -3804
Security - to report trespassers • in case of emergency • call Jeff. Twp. Police 697-1300

The Porthole is published by G&G LaserPublishing 663-4649

BABYSITTERS

name	completed Red Cross Babysitting Course	age	phone	name	completed Red Cross Babysitting Course	age	phone
Evan Genaud	yes	15	-4649	Sarah Murray	yes	13	-0478
Amy Hendrickson	yes	13	-1844	Maggie Sinclair	yes	12	-1346
Elizabeth Moore	yes	12	-1493	Want to be included on the babysitters list?			
Nina Sutcliffe	yes	13	-0632	Call the LFYC office (0158) or G&G (4646); give			
Brooke Bailer	yes	11	-0641	us your name, age, phone & whether you've			
Cara Leach	yes	13	-1703	completed the Red Cross Babysitting Course.			



FAMILY RESTAURANT
 215 Espanong Rd, Lake Hopatcong

663-5677

FREE HOT HOME DELIVERY

**Now that the weather's cold we're
 Featuring HOME-MADE SOUPS!**

Thin Crust • Pan • Sicilian Pizza • Our Own Special STUFFED PIZZA
 Full Lunch and Dinner Menu • Daily Dining Room Specials

COMMODORE'S MESSAGE

Dear Members,

Thanks to all the people who came out and helped with our Fall Clean-Up. We greatly appreciate the sacrifice these people made by giving up their day off to come out and helping to maintain our Yacht Club facilities. I hope to see more people pitching in at the Spring Clean-Up.

During October and November the Nominating Committee will be trying to find people who are interested in serving as Trustees on next year's Board. If anyone is interested in having the opportunity of serving the community please let me or any of the current Trustees know and we will make sure you are contacted by the Nominating Committee.

Andy Bethune
Commodore

THANK YOU

Many thanks to Joe Pilewski, Ken Greene and Dave Kershaw for resetting the 2 poles on Yacht Club Drive next to the entrance to the launching area. Their consolation, after all their labors, is that the blue pick-up that toppled them certainly came out on the short end of that confrontation.

CELEBRATING
OUR 10th YEAR!

ANYTHING DULL
WE SHARPEN

50%
OFF

SCOTT'S
SHARPENING
SERVICE

50%
OFF

1st driveway after McDonald's
Rt. 15 South • Lk. Hopatcong • 663-0798

JEFF. TWP. LIBRARY NEWS

Dinosaurs In Your Backyard will be presented on October 6 from 10:30 to 11:30 am. Kay Money will bring along her snakes and turtles for another hands-on experience for children ages 4 and up (4 & 5 yr. olds must be accompanied by an adult). Registration is required.

Investing for College Funding will again be presented for parents of prospective students. Oct. 11, 7:30-9pm.

Book Discussion Group meeting regularly on the last Thursday of the month in the library's Riker Room. Recent titles have included *Cannery Row* by John Steinbeck, *Frankenstein* by Mary Shelley, *Hotel New Hampshire* by John Irving and *Player Piano* by Kurt Vonnegut. Call the library for the current title. Anyone is invited to join the group at any time.

FRIGHT NIGHT!

Cover your eyes! Ghosts and goblins will be on the prowl in Jefferson the Witching Night! The Jefferson Arts Committee has cooked up a spooky Halloween walk at Mahlon Dickerson Reservation on October 27. An evening walk through such highlights as a Mutating Toxic Waste Dump, A Ghost Ship, Demented Disco, Revolting Restaurant and the Living Forest will surely appeal to the ghoulish at heart.

Those ready for a scare (and over 7 years old) should meet at the J.T. Middle School parking lot on Weldon Rd. between 6 and 9 pm where they will be relieved of \$3. per person and bused to the eerie site. Scarees are asked to bring a flashlight. (Raindate 10/28).

LFYC TRUSTEES MEETING MINUTES

September 11, 1990

(Minutes are synopsisized. For a complete copy, please see Margaret at the LFYC office)

SWIM TEAM Edna and Warren Pym were in attendance to tell the Trustees that they are willing to work to organize a LFYC swim team. A lot of work is necessary to prepare the premises before a team could operate and the money and work would be considerable. There was discussion on non-resident team members. A suggestion was made that the swim team have the same non-resident arrangements as Nursery School does. The team would be self-supporting through fundraisers and team member fees.

VISION COMMITTEE Results of the questionnaire have been tabulated. The committee suggests the following be investigated by the Club as per the questionnaire: bus trips, separate dues structure for senior citizens and non-members with lower price and reduced privileges, fee for tennis court use, movie night and swim lessons, and a maintenance fee of \$25/family for those not attending clean-up day. A brochure for new residents will be developed and a column will be started in the *Porthole*.

NOMINATING Nominating Committee members are Betty Peters, Paul Murray, Butch Mahler, Evelyn Waclawicz, Carol Bashant and Edna Pym. Deadline for nominations is October 25, 1990. There are 4 vacancies this year. The terms of Jim Gray, Steve Levinson and Greg Plifka are ending and Stuart Saposnik is resigning.

NURSERY SCHOOL The state fire inspection has been completed. Items that need to be addressed are: Exit signs on all exits, illuminated lights w/ battery back-up at both exits. A fire alarm system. Approximately 4 tons of sand will be purchased for the playground area. The cabinets in the kitchen will be painted and some of the doors replaced. A copier will be donated to the Club by Mr. and Mrs. Hendricksen.

BUILDINGS The total cost for painting all the buildings and repairing the galley should not exceed \$6000. An estimate was also received for the work on the point. The board would like to get the buildings taken care of first before addressing this. Clean-Up Day had about 38 families participating.

SWIM TEAM A letter of commitment will be signed by Board and Pym (representing LFYC swim team) to cover following: 5 year use; \$1 million liability insurance w/LFYC named; team provides for all its financial needs; pump-out LFYC septic system every 2 yrs; prior Trustee approval of any permanent facilities; use of LFYC limited to point area, bathrooms, parking; parking designated by Trustees; team commitment to improve area of use; details not covered here worked out by mutual consent of Trustees & parent association.

DOCKS Dock rentals will be reviewed at the March Trustees meeting, with the intention of renting once again to non-member/non-residents.

BUDGET The 1990-91 budget was presented and accepted. Dues and dock fees will not be increased at this time.

Join the many satisfied Lake Forest residents who have received the benefits of chiropractic care at the

RT. 15 CHIROPRACTIC CENTER

Dr. Andrew J. Rajeckas - Chiropractor

- If you suffer from headaches, neck, low back, shoulder and leg pain
- If you want to improve your energy level and reduce stress and tension
- Call us today!

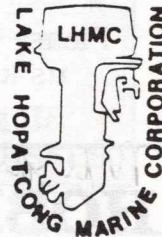
- **Affordable Fees**
- **Acute & Chronic Cases Welcome**
- **Most Insurance Accepted**
- **Personalized Service**
- **Children & Elderly Patients Welcome**
- **Mon. - Sat. Hours**
- **Evening Appointments Available**

762 Jefferson Square • 663-3002

Rt. 15 south - next to United Jersey Bank, across from Pathmark



LAKE HOPATCONG MARINE CORP



SPECIALIZING IN MOBILE MARINE SERVICE

663-1668

BOAT STORAGE PRICES

Boat Length up to	17ft.	19ft.	21ft.	23ft.
Outdoor Storage	\$125.	\$150.	\$200.	\$300.
Indoor Storage	\$250.	\$300.	\$350.	\$500.

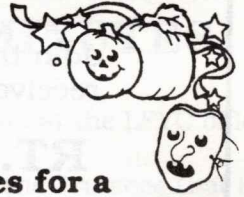
BOAT WINTERIZATION & SERVICE

Winterization	Outboard Motors	\$50.
	Inboard/Outboard - 4 cylinder	\$75
	- 6 cylinder	\$85
	- 8 cylinder	\$95.
I/O Engine Oil Change & New Filter	- \$35.	
ShrinkWrap	\$6./ft (\$5./ft with boat storage)	
Lower Unit Oil Change - Outboard	- \$10.	
I/O	- \$15.	
Bottom Cleaning	\$5./ft (\$4./ with boat storage)	

PICKUP AND SPRING DELIVERY TO YOUR BOAT SLIP IS AVAILABLE

ALL INDOOR AND OUTDOOR STORAGE WILL BE AT OUR NEW FACILITY ON 10 NOLANS POINT PARK ROAD (ACROSS STREET FROM WINDLASS RESTAURANT)

WANTED!



Goblins, Witches & other Strange Creatures for a

CHILDREN'S HALLOWEEN PARTY



Where: LFYC Clubhouse

When: Sat. Oct. 27

9:30 - 11:00 AM



- **Parade for children of all ages**
Parents bring your cameras!
- **Halloween games, crafts and treats**
- **Coffee, tea & adult goodies for parents**
Kids bring your parents for some socializing

Please help us to plan for your child by calling ahead and letting us know if you will be attending and/or are willing to bake!

Joyce 663-5358 • Chris 663-0478 • Office 663-0158

TV Sports (873.33) m.l.

HOBBY HORSE ARTS & CRAFTS

HURDTOWN PLAZA
808 Route 15 South, Lk. Hopatcong

663-3500

OPEN DAILY 9:30 AM - 5:30 PM
SUNDAY NOON-5 PM • THURS. TILL 7 PM

Daily
UPS
Pick-Up
Mon-Fri

Glow in the Dark Paint \$2.99
Lawn Sheep
sm. \$9.99 - lg. \$12.99
reg. \$19.99 & \$25.99
FREE lg. ceramic
Simmering Pot, value \$4.95
w/8oz. bag potpourri \$5.95
acrylic Pumpkin Paint reg. \$7.41
6 pak, 1 oz. jars \$3.88

Make Your Own Halloween Costumes
With Our Supplies

PERSONALS & CLASSIFIEDS

FOR SALE '86 Mercury Sable LS wagon,
fully loaded, 47,000 miles, \$6,500., call
Leslie -1333

FOR SALE 3 pc. Childcraft set: crib
w/waterbed mattress, 5 drawer chest &
changing table, Graco converta-cradle
swing, 2 bar stools, call Joyce -5358

Unique Style

Hair Salon

Fine Salon Service for the Entire Family

**Happy
Halloween**

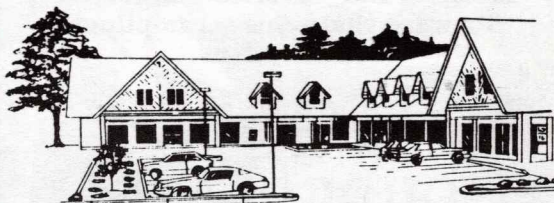
Now Using & Selling
BAIN DE TERRE
by ZOTOS

Mon & Fri 10-6
Tues & Thurs 10-8
Sat 9-3 • Wed Closed

414 Route 15 South
Jefferson Twp.
328-9612

TOTAL **E**YECARE

takes pride in offering you
OPTICAL SERVICES



Prescription Eyeglasses • Sunglasses
No-Line Bifocals • Ultra-Thin Lens Materials
Contact Lenses • Solutions and Supplies

Over 1000 frames in stock

20% OFF
COMPLETE PAIR OF
PRESCRIPTION GLASSES

Computerized Optical Lab on the Premises
for High Quality Service FAST!

Senior Citizen Discounts

**Open Early Mornings
Late Evenings • Saturdays**

CALL FOR OUR LOW FEES

663-0800

694 ROUTE 15 SOUTH PLAZA
LAKE HOPATCONG, NJ

Just past Burger King on Route 15 South

Peggy's
**COUNTRY
FLORIST**

10% DISCOUNT

Halloween Arrangements

WITH THIS AD
except wire orders

Gourds • Indian Corn

(coupon expires 10/31/90)

Open 7 days • 663-0001

Pathmark Shopping Center

FTD Wire Service • We Deliver

SCHOOL DA

Nursery School Moms Sharon Messerle and Carol Adessa of Lake Shawnee share this scrumptious recipe with us.

DEATH BY CHOCOLATE

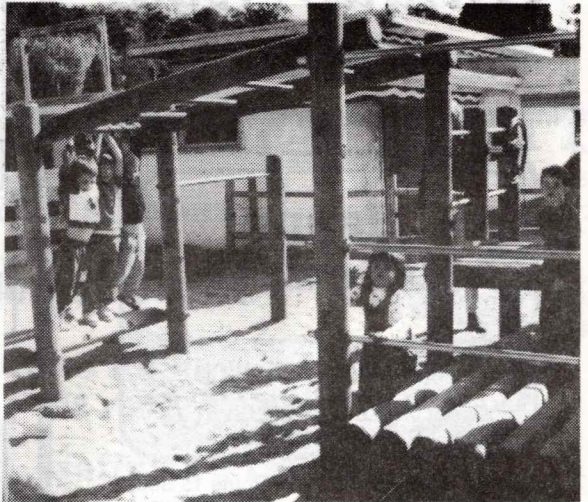
Prepare one basic 9x12 chocolate cake. While still warm, pierce with toothpick & pour 1/2 cup Kahlua over entire cake.

1 large Cool Whip
3 pkgs. Jello chocolate mousse, prepared
6 Skor candy bars, crumbled

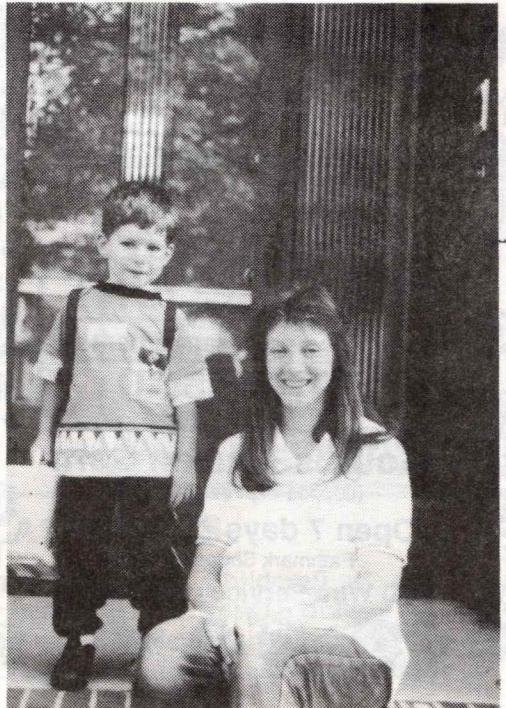
Starting with cake, cut into 1" squares. layer ingredients into glass dish (or try a punch bowl).

Cake
Mousse
Skor bars
Cool Whip

Continue until finished. Top with chocolate curls or slivers



Lake Forest Nursery School students enjoy the first days of school this fall.



N
S
happ
wond
excit
child
N
purch
that
for al
A
Hend
a cop
the C
Nurs
W
of s
playg
the ch
T
for a
What
sell a
the
easel
N
h
Sale
Oct. 2
are g
W
rese
ENT
books
will
1. M
many
year
own
avail
Esse
Robb
reser

DAYS!

SCHOOL DAYS!

NURSERY SCHOOL NEWS

School's open! What happy faces this year. It's wonderful to see all the excitement reflected in the children's eyes.

Nursery School has purchased a wet/dry vacuum that will be left at the Club for all our use.

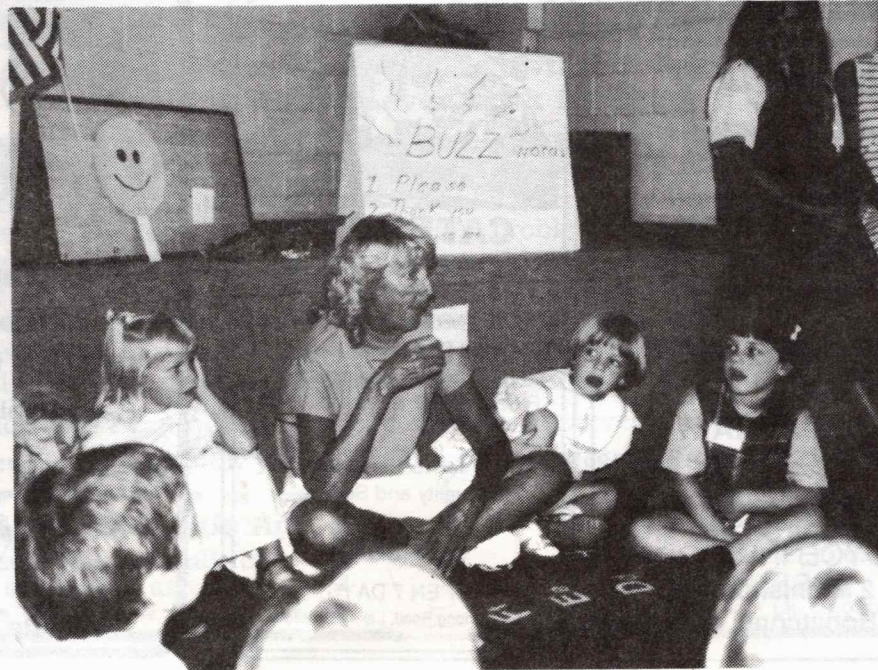
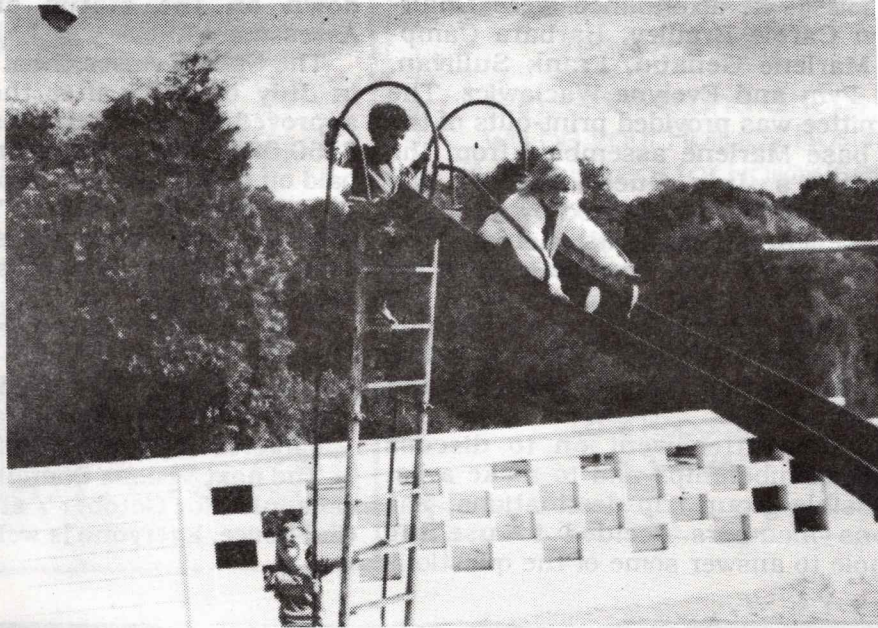
A big thank you to the Hendrickson's. We now have a copier that will be kept in the Club office for Club and Nursery School use.

We are purchasing 4 tons of sand to improve the playground, especially under the climber and the big slide.

Thank you! Thank you! for all the toy donations. What we cannot use we will sell at a garage sale and save the profits towards new easels. Ours are a little sad.

Nursery School will be having a Halloween Bake Sale at Pathmark on Sat., Oct. 27, 8:30 am til the goods are gone.

We are now taking reservations for the ENTERTAINMENT '91 books. The cost is \$35. They will be available November 1. Morris/Passaic Co. has many more coupons this year and Sussex Co. has its own book. We have both available along with Essex/Union Co. Please call Robbie Levinson for your reservation at 663-1383.



VISIONS COMMITTEE

The LFYC Visions Committee held its scheduled meeting on September 9 at the Clubhouse. In attendance were Chairperson Carole Bradley, Barbara Campbell, Marlene Genaud, Frank Sullivan, Edna Pym and Evelyne Waclawicz. The Committee was provided print-outs of the data base Marlene assembled from the committee's July Questionnaire. The questionnaire was answered by a total of 65 Lake Forest residents including 44 members and 21 non-members. The most frequently selected activities were, in descending order: Group Trips, Family Day, Organized Children's Sports, Public Relations package for new residents and Kids Swim Team.

The committee went on to discuss limited memberships and to make a list of possible group trip destinations. The Visions members decided to use the Porthole to answer some of the questions

residents asked on their questionnaires. This month we'll give you a short run-down on the status of the Special Assessment:

The Special Assessment was instituted in July of 1985 after the membership approved improvements estimated to be \$250,000. The improvements were to be paid off over 10 years (1985-1995) through the assessment of each LFYC member. To date the total expended is \$175,821.66. The following projects have been accomplished:

- tennis court • catwalk • playground
- beach retaining wall
- landscaping • heating & duct work
- permits, arch. fees, cleaning site
- interest on bonds • roof

The next Visions Committee Meeting is scheduled for October 7 at 7:30pm at the Clubhouse. Everyone is welcome.



WE CARE ABOUT YOUR HAIR

Tues. - Thurs. 10-8 pm
 Fri 9-5 pm
 Sat. 9-4 pm

JOYCE INWOOD
 2 Minnisink Road
 Lk. Hopatcong, NJ 07849



JEFFERSON CATERERS

- Hot & Cold Buffet Specialists
- Complete Party Packages
- Special Mid-Week & Corporate Discount Programs
- Party Planning Assistance
- Free Delivery & Set-Up

"The Area's Leading Caterer For Quality and Service"

663-3612

OPEN 7 DAYS
 248 Espanong Road, Lake Hopatcong

Stephanie's
DOG HOUSE

Professional Grooming

All Breeds

Pick-Up & Delivery

Reasonable Rates

663-LOVE
 (663-5683)



770 Route 15 South

GOSHIN RYU

KARATE

KARATE
Develops the
"Yes, I Can" Attitude!

**SPECIAL
Introductory
LESSONS**



Try Something New & Exciting
Three Introductory Lessons

~~\$19.95~~

Karate will add dimension to your life! You will not only learn interesting self-defense techniques, best of all you will gain leadership abilities. Classes are forming now!

SELF DEFENSE

FITNESS

FUN



Learn mental discipline as you gain confidence in yourself. Develop your flexibility and fitness as you learn the self-defense skills of the martial arts. Call now to find out more about our **SPECIAL INTRODUCTORY COURSE.**

THE AMERICAN-OKINAWAN

MEMBER

KARATE INSTITUTE



LAKESIDE SHOPPING CENTER
101-15, LAKE HOPATCONG, NJ
663-5578

PROFESSIONAL
BLACK BELT
INSTRUCTORS

The Goshin Ryu
Karate Association
is one of
New Jersey's oldest
and most reputable
Karate Associations

GIG'S GARDEN

Flowers & Gifts

Gig, Goblins and Ghosts
will be your Holiday Hosts
And this year for Halloween
there'll be new things
you've never seen!

**OPENING
October 1990**

15 South Plaza
Lake Hopatcong
663-3062

Tired of the same old solutions?

- Solutions which create their own problems?
- Solutions which never work for long.

WE HAVE THE ANSWER

At Lake Hopatcong Family Chiropractic you won't be given short term answers to long-standing problems. We know that recurring spinal problems require more than merely symptomatic relief. Therefore, we deal with your problem on a corrective basis. We spend the time to get to know you. We perform a detailed examination of your spine to evaluate its condition and function. Once we know what your problem is and how to correct it, we explain it to you in detail, in words you can understand. Correction involves an individualized program of spinal adjustments and rehabilitative exercises.

YOU decide your health goals - relief correction or preventive maintenance.

YOU determine how rapidly you get there - by your degree of participation.

Call and Mention this Ad.

**You will receive a consultation
and spinal screening at no charge.**



**LAKE HOPATCONG
FAMILY CHIROPRACTIC**
Kim R. Stetzel, D.C.

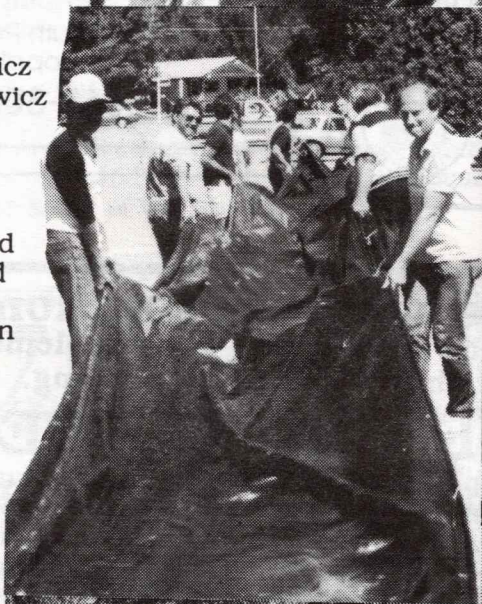
663-5633

231 Espanong Rd • Lk. Hopatcong

LFYC FALL CLEAN-UP

Harry Moore
Glenn DeSantis
Tom Chrobak
Bernard Genaud
Joe Conk
Ginny Conk
Joe Pilewski
Janet Pilewski
Marlene Genaud
Linda Hendricksen
Amy Hendricksen
Bob Dalton
Joyce Bethune
Frank Burrafato
Joyce Morris
Tom Morris
Vinnie Waclawicz
Evelyne Waclawicz
Jim Bashant
Joe Bashant
Carol Bashant
Rick Stafford
Colleen Stafford
Bob Drummond
Paul Murray
Robbie Levinson
Steve Levinson
Sara Sinclair
Tom Sinclair
Andy Bethune
Jim Gray
Greg Plifka
Liz Greene
Ken Greene
Edna Pym

THANK YOU!



DINING OUT

The PORTHOLE's Dining Out Guide is a selective guide to those area restaurants that have shown their desire to reach Lake Forest residents by purchasing advertising space in this guide.

Prices are based on the average cost of an entree without the addition of drinks, tax & tips.

✓ - has bar or public rm. in addition to dining rm

☞ - may bring your own wine or beer

X - has no smoking section

☐ - reservations suggested

↔ - has take-out

Ⓢ - home delivery

AX=American Express, CB=Carte Blanche,

DC=Diners Club, MC=MasterCharge, V=Visa

HECTOR'S NORTH SHORE INN-Rt. 181, Jefferson, 663-2222, rustic decor, continental cuisine, Tues-Sun 11:30am-11pm, ave. entrees \$8-\$25, AX, MC, V, ✓ ☐ ↔

INN AT JEFFERSON SQUARE-Dover-Milton Rd, 697-9155, show-biz nostalgia decor, international cuisine, Wed-Sat open at 6pm, Sun open at 4:30pm, live entertainment Fri & Sat, entrees ave. \$13.95, private parties, catering, AX, CB, DC, MC, V, ✓ ☐ ↔

LAKESIDE LUNCHEONETTE - Lakeside Shopping Ctr, Rt. 15, Lk. Hopatcong, (663-0233), homey-rustic decor, homemade Am. & regional, Mon-Fri 5am-8:30pm, Sat til 3pm, Sun Til 2:30pm, \$10 & under, ☞ ↔

NANCY PIZZA & SUBS - Lakeside Shopping Ctr, Rt. 15, Lk. Hopatcong, 663-4400, contemp. decor, Italian cuisine, daily 10am-11pm, \$5.50 ave. entree, ↔ ☞

PIES-ON PIZZA - 215 Espanong Rd, Lk. Hopatcong, 663-5677, rustic/comtemp. decor, Italian cuisine, family restaurant, Mo-Th 11am-10pm, Fr-Sa 11am-11pm, Su noon-9pm, entrees \$3.95 & up, ☞ ☞ ↔

Weekdays After
4 p.m.

Weekends After
9 a.m.

663-2299

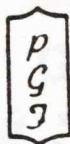
Don't Be Stumped
Stump Grinding Service

Bob Williams

Maintenance
& Lawn Care
FALL CLEAN-UP SPECIAL
10% DISCOUNT WITH THIS AD
expires 11-24-90
E & D LAWN CARE

663-1073

22 Valencia Isle Dr.
Lake Forest, N.J. 07849



Professional Guidance Firm, Inc.

CONSULTING SERVICE
INDIVIDUAL, GROUP, FAMILY COUNSELING
FOR ALCOHOL, DRUGS AND OTHER ADDICTIONS

1451 ROUTE 46 WEST
LEDGEWOOD, NJ 07852

(201) 584-2692

VERTICAL & MINI BLINDS
PLEATED SHADES

FREE SHOP AT
HOME SERVICE

DISCOUNT WINDOW TREATMENTS
SALES • SERVICE • INSTALLATIONS

CALL LINDA
663-1844

JEFFERSON, N.J.

ENVIRONMENTAL NEWS

In a recent interview, Mr. Jim Peters, Jefferson Township's Recycling Coordinator, was pleased to announce a number of upcoming updates in the township's recycling program.

Mr. Peters sees recycling of nearly all our household plastic containers by the end of this year. At present the only plastics Jefferson residents may include in their bi-weekly recycling container are those marked "#1" (they may also say "1 PETE"). These include all plastic soda bottles, plastic peanut butter jars and many plastic fruit juice bottles.

Jefferson residents are to recycle all

- aluminum cans • bi-metal cans
 - all colors of glass • #1 plastic containers in ONE 25 GALLON CONTAINER.
- Newspapers must be bundled and tied with twine or string.

Mr. Peters reports (and we've also noticed on an informal drive-by survey in

Lake Forest) that there are still a few residents out there who believe we still have to separate our recyclables. If you're among those please read the paragraph above again. Jim would also like to re-emphasize that **NO recyclables in plastic bags will be accepted.** Your newspapers must be tied with twine or string and your plastic, glass and metal must be in one plastic or metal free-standing container.

Recycling will be the theme when Jefferson's recycling office hosts a visit from Mr. Hugs, videos and a hands-on session to learn how to recycle laundry detergent bottles into bookmarkers. Each child should bring one clean laundry detergent bottle (extras will be on hand). This Recycling Fun Day will be held on October 20 at the Jefferson Twp. Library on Weldon Rd from 10am to 1:30 pm.

AL HUTCHINS & SON EXCAVATING

Septic Systems Installed and Repaired

663-2142

CALL FOR YOUR FREE ESTIMATE

Commercial

Residential

De Vito Roofing

Lake Hopatcong

Roofing N Siding

De Vito Proof Your Roof

Fully Insured

663-0896

201-663-1335

JIM McGRAW
Finish Carpenter
Kitchens and Baths

65 Yacht Club Drive
Lake Hopatcong
N.J. 07849

LFYC Swim Team

Parents ORGANIZATIONAL MEETING

October 12, 7:30 pm

Who: Parents of LFYC Member children who are interested in swimming on the Lake Forest Swim Team next summer

What: Set-up a framework for:
running the team
recruiting swimmers
raising funds

When: October 12, at 7:30 pm

Where: LFYC Clubhouse

**All parents
whose children
are interested
in swimming
should attend.**



Jefferson Florist

770 Rt. 15 South • Lk. Hopatcong, NJ 07849

**NEW
LOCATION**

INCREASING OUR SERVICE!

Customized Accessories
Weddings & All Occasions
Fresh & Silk Flowers
Cards & Gifts

Homemade Candy
Notary Services Available
N.J. Bell Payment Center

**FREE GIFT TO FIRST
100 CUSTOMERS
GRAND OPENING DAY**

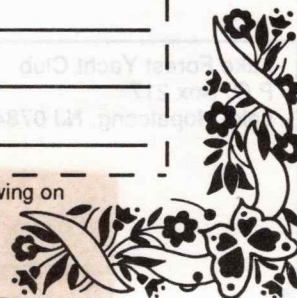
WE DELIVER

AFS WIRE SERVICE

663-5275

name
address
phone

Bring Coupon in for Drawing on
HANGING BASKET



FAMILY DENTISTRY

Leave Your Checkbook At Home!
Bring Your Claim Form & Policy Book



663-4220

JOEL M. MOSKOWITZ, DMD
28 Bowling Green Pkwy
Lake Hopatcong
(Look for the Tooth Clock)

Come On In For A Complete Exam & X-Rays.
(A.D.A. Code 0110).

Since Most Of The Insurance Companies We
Work With Cover These Services Fully, There
Won't Be Any Out-Of-Pocket Expense!

ADULTS & CHILDREN

- ROOT CANALS
- COSMETIC BONDING
- EXTRACTIONS
- CROWNS AND BRIDGES
- IMPLANTS
- FULL & PARTIAL DENTURES
- ROUTINE RESTORATIVE TREATMENT
- NITROUS OXIDE AVAILABLE
- GUM (PERIODONTAL) TREATMENT



MARKET

663-1000
5 Edison Road
Lake Hopatcong
FAX 663-2210

We now have



&
**SADDAM
HUSSEIN**

T-SHIRTS!

Did you check your child's homework today?

Lake Forest Yacht Club
P.O. Box 217
Lake Hopatcong, NJ 07849

Lake Forest Yacht Club
Post Office Box 217
Lake Hopatcong, NJ 07849

BULK RATE
U.S. Postage

PAID

Lake Hopatcong
N.J. 07849
PERMIT NO. 3

CARRIER ROUTE PRE-SORT